



Entertainment & Sports Arena DESIGN REVIEW

WASHINGTON
ARENA DESIGN
GROUP JV

Marshall | Moya Design

ROSSETTI



SITE ANALYSIS


SITE ANALYSIS

St. Elizabeths East
Development area
as outlined in the
Redevelopment
Framework Plan approved
Dec. 16, 2008.



SITE ANALYSIS

Key:

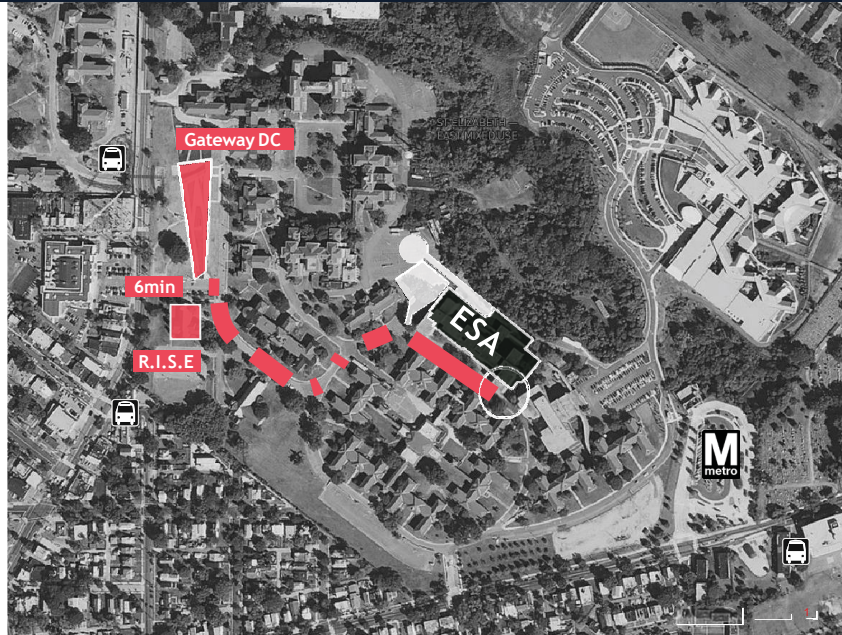
-  Bus Stop
-  Path from ESA Campus



GATEWAY DC



R.I.S.E.



SITE ANALYSIS

Key:

- Bus Stop
- Service Path
- Patron Path
- Entry
- Extend Cherry Street to allow building entry





SITE PLAN

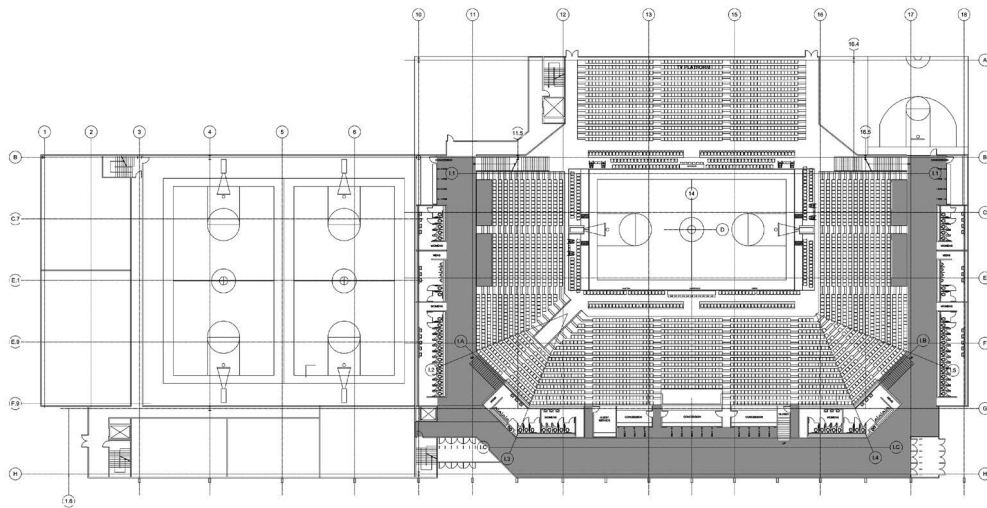
SITE PLAN





FLOOR PLAN

FLOOR PLAN

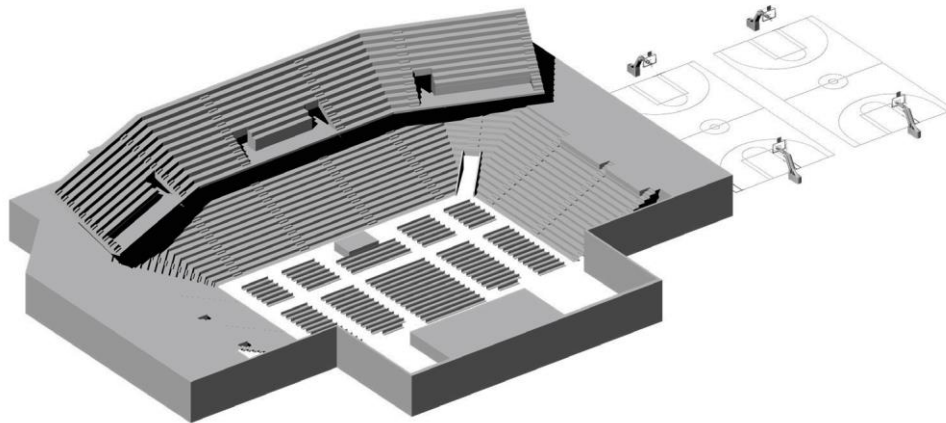




ARENA BOWL CONFIGURATION

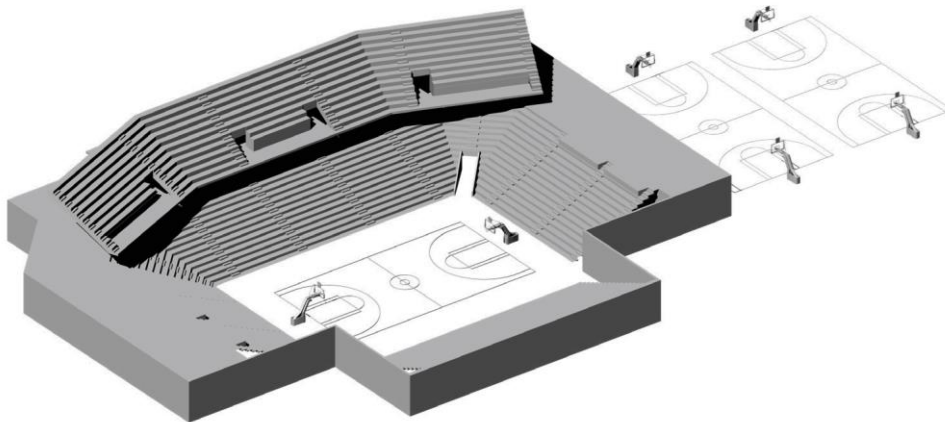
ARENA BOWL CONFIGURATION - STAGE

BOWL AXON - STAGE



ARENA BOWL CONFIGURATION - BASKETBALL

AXON - BASKETBALL





CONTEXTUAL INFLUENCES

CONTEXTUAL INFLUENCES



Ivy Walls.
The Center Building at St. Elizabeths
early 20th Century



Vertical repetition.
The Main Building, Western Campus at St Elizabeths



Heightened massing at entry.
The Center Building at St. Elizabeths
2006

CONTEXTUAL INFLUENCES



Wood Shelter and Warmth.



Activated Public Space.

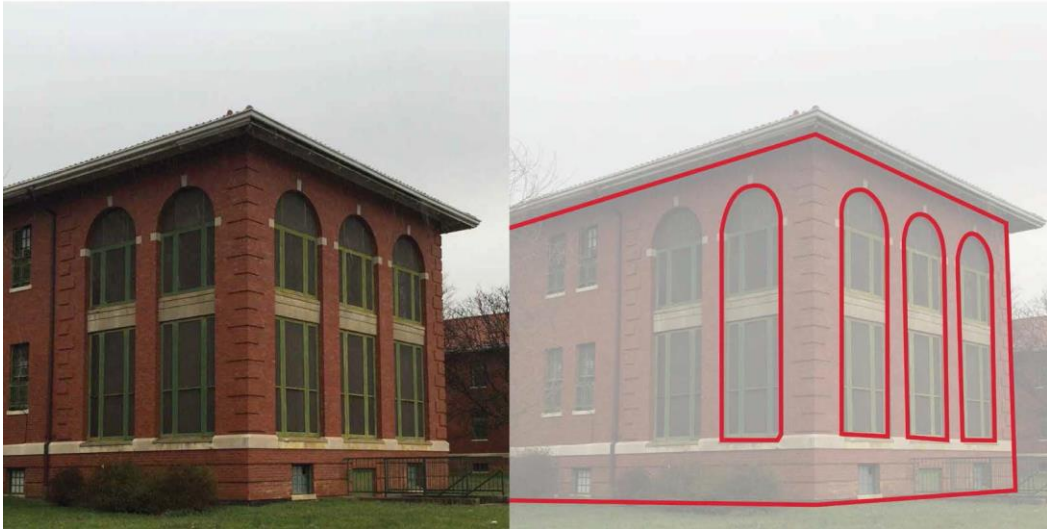


Dynamic Floating Roof Form

CONTEXTUAL INFLUENCES



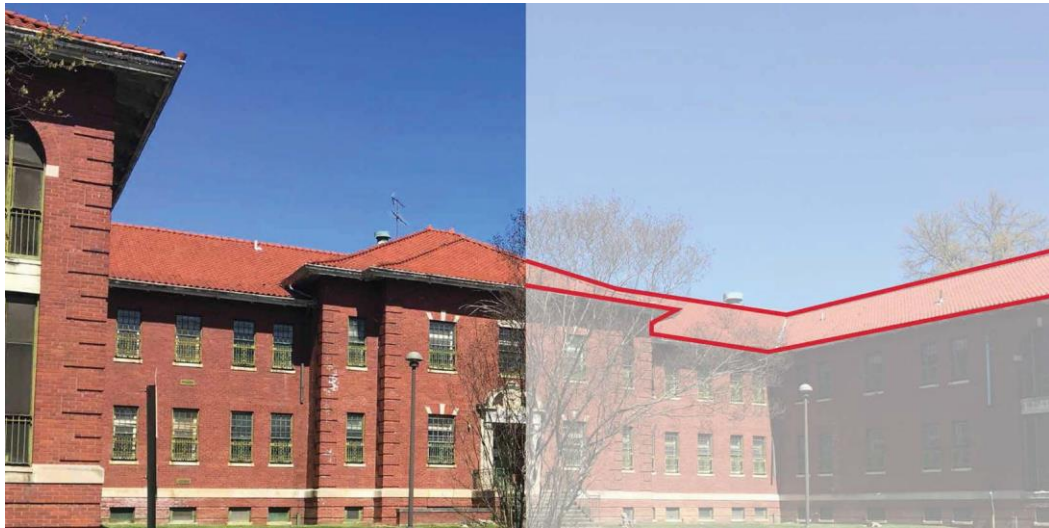
CONTEXTUAL INFLUENCES



CONTEXTUAL INFLUENCES



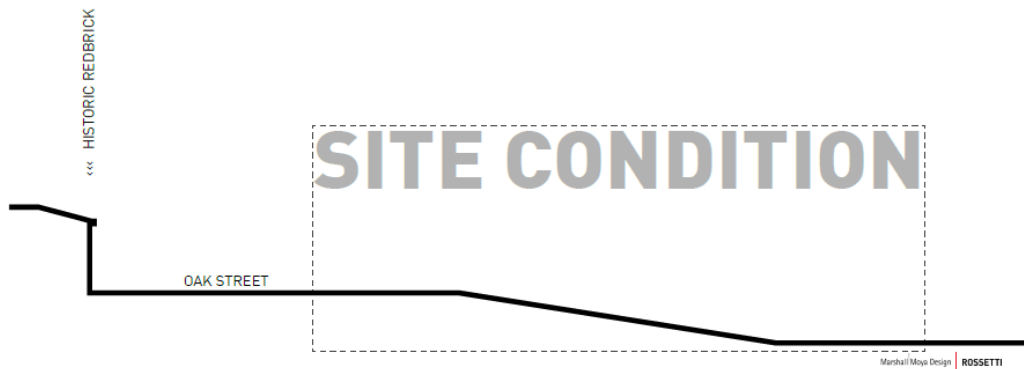
CONTEXTUAL INFLUENCES



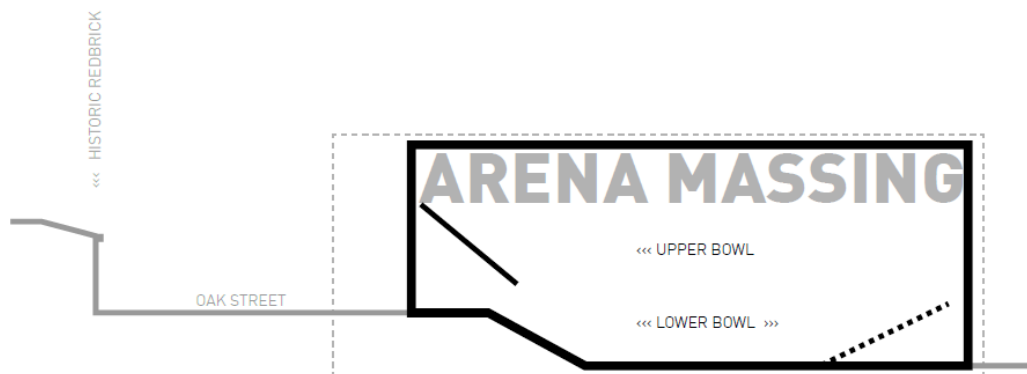


DESIGN APPROACH

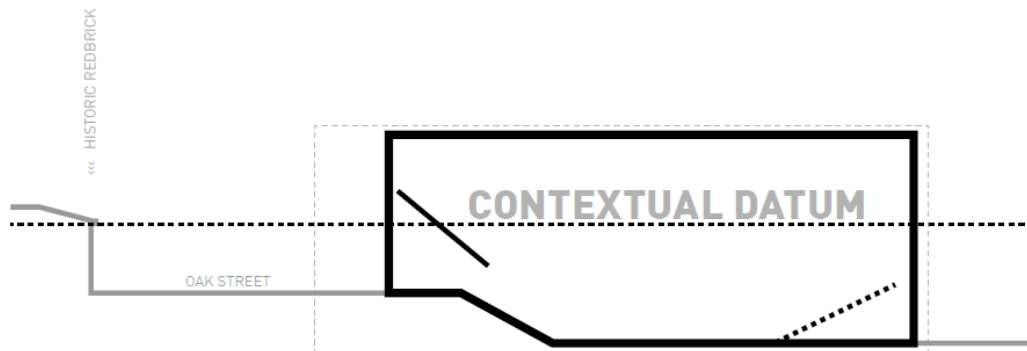
DESIGN APPROACH



DESIGN APPROACH

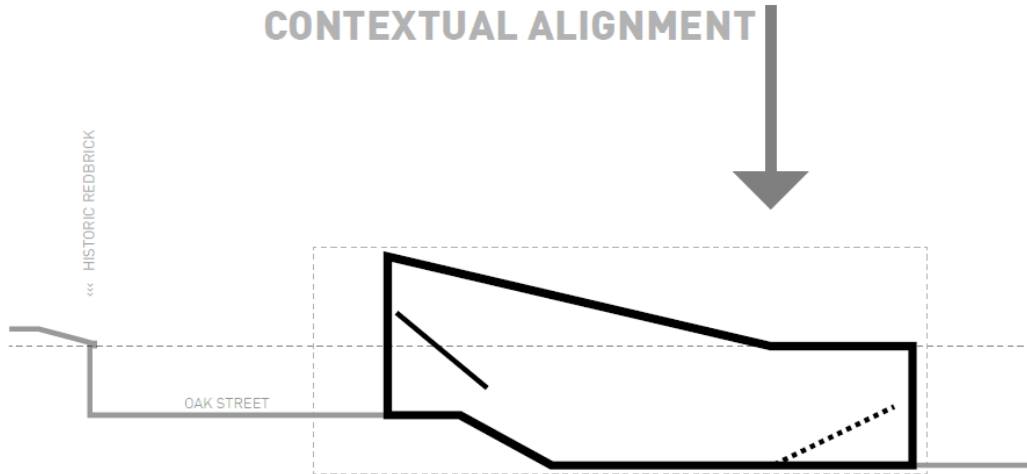


DESIGN APPROACH



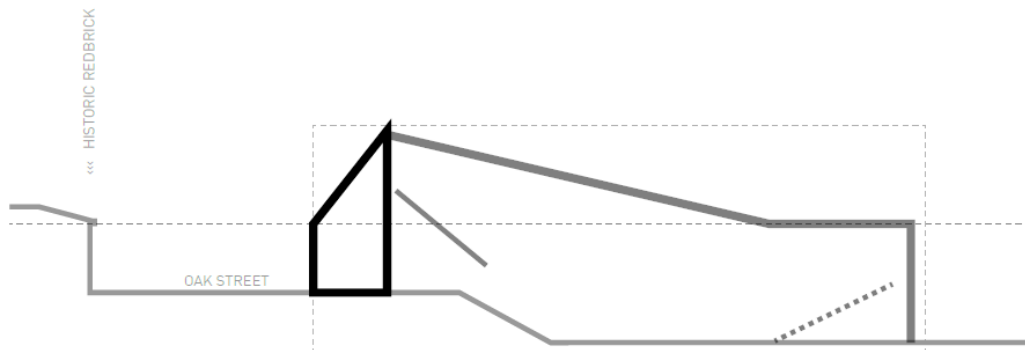
DESIGN APPROACH

CONTEXTUAL ALIGNMENT



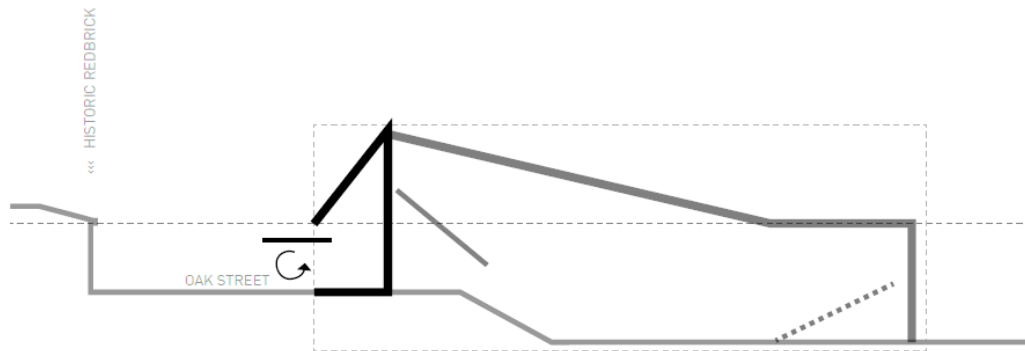
DESIGN APPROACH

PUBLIC COLONNADE



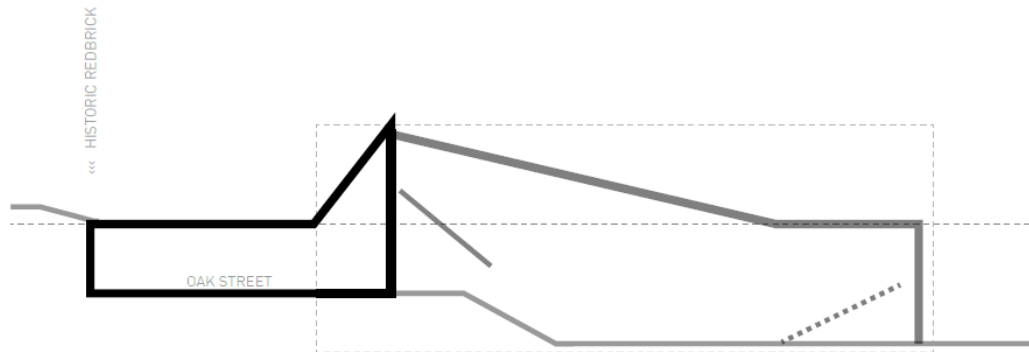
DESIGN APPROACH

COMMUNITY EMBRACE



DESIGN APPROACH

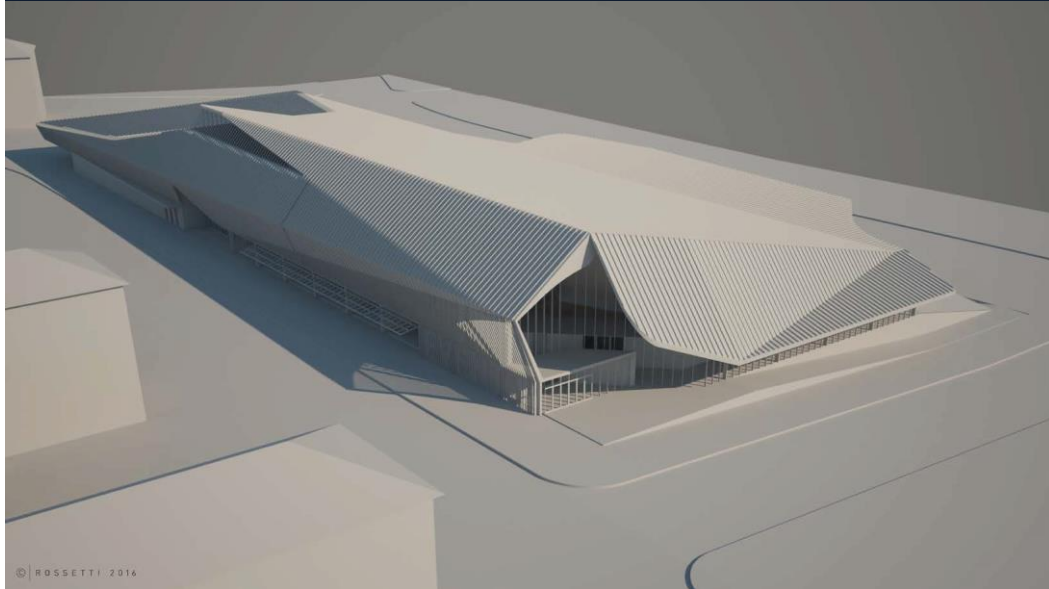
URBAN ACTIVATION





BUILDING AESTHETIC

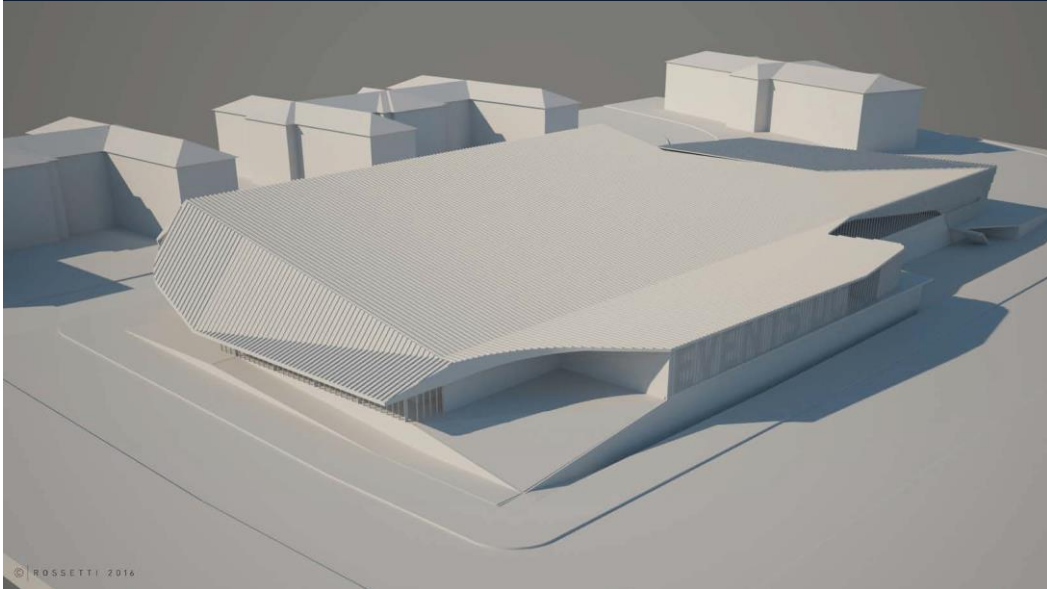
BUILDING AESTHETIC



© ROSSETTI 2016

Marshall Moya Design | **ROSSETTI**

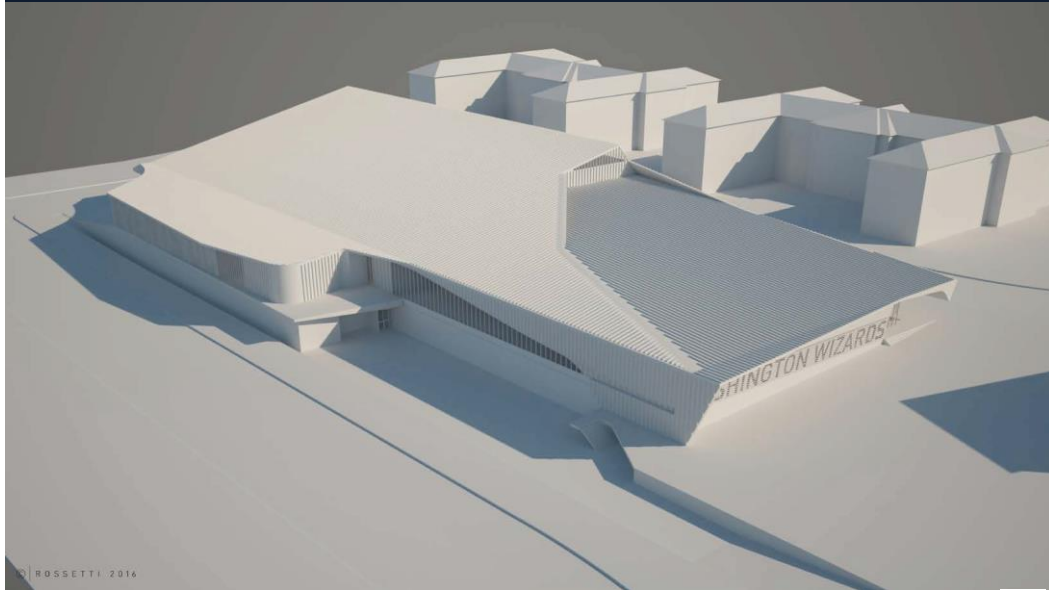
BUILDING AESTHETIC



© ROSSETTI 2016

Marshall Moya Design | **ROSSETTI**

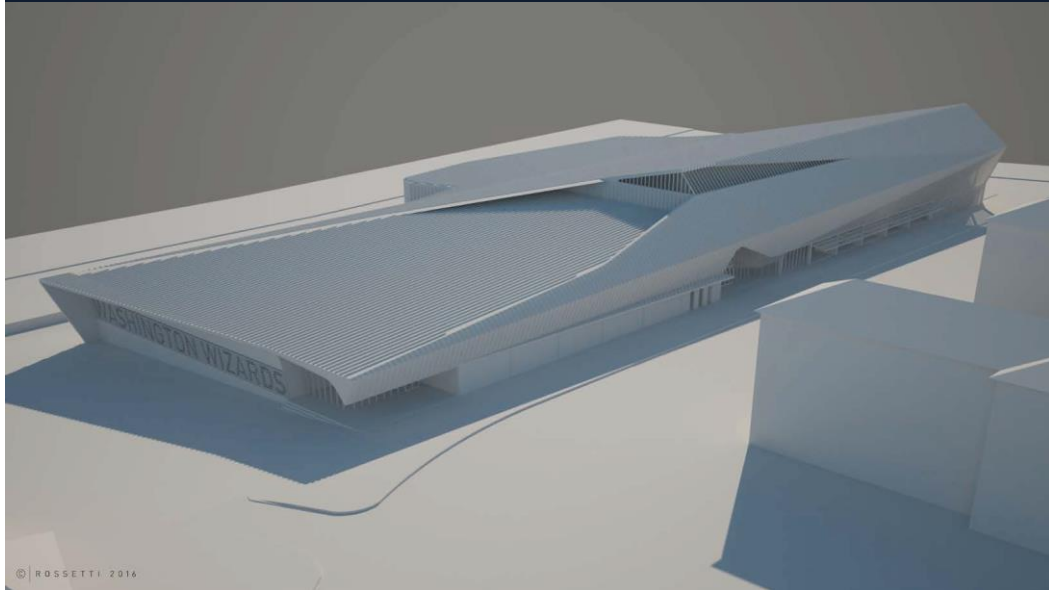
BUILDING AESTHETIC



© ROSSETTI 2016

Marshall Mayo Design | ROSSETTI

BUILDING AESTHETIC



BUILDING AESTHETIC



© ROSSETTI 2016

BUILDING AESTHETIC



© ROSSETTI 2016

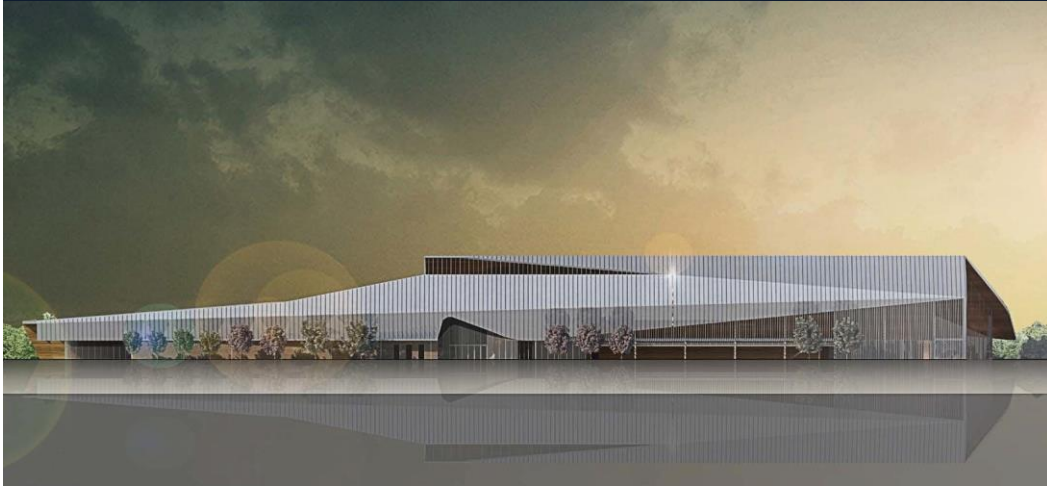
BUILDING AESTHETIC



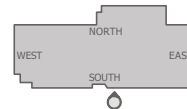
BUILDING AESTHETIC



SOUTH ELEVATION

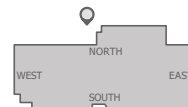
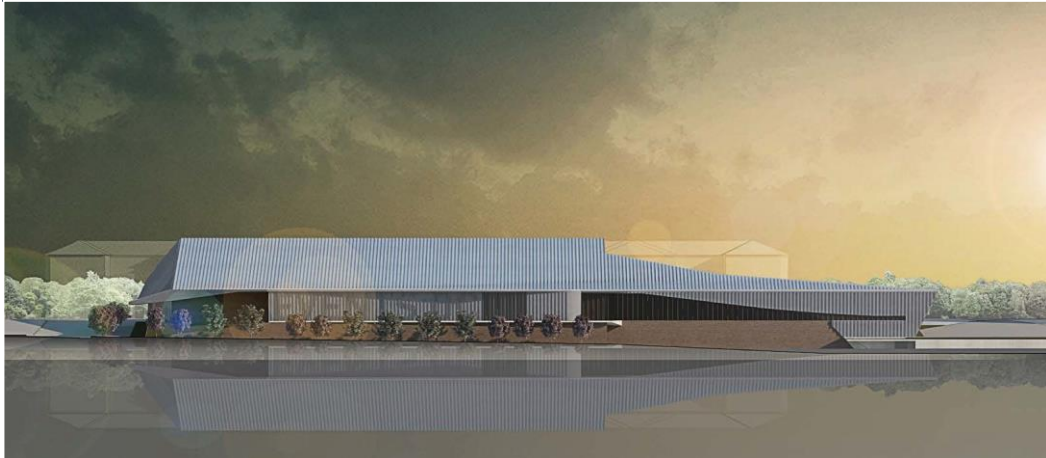


WTS

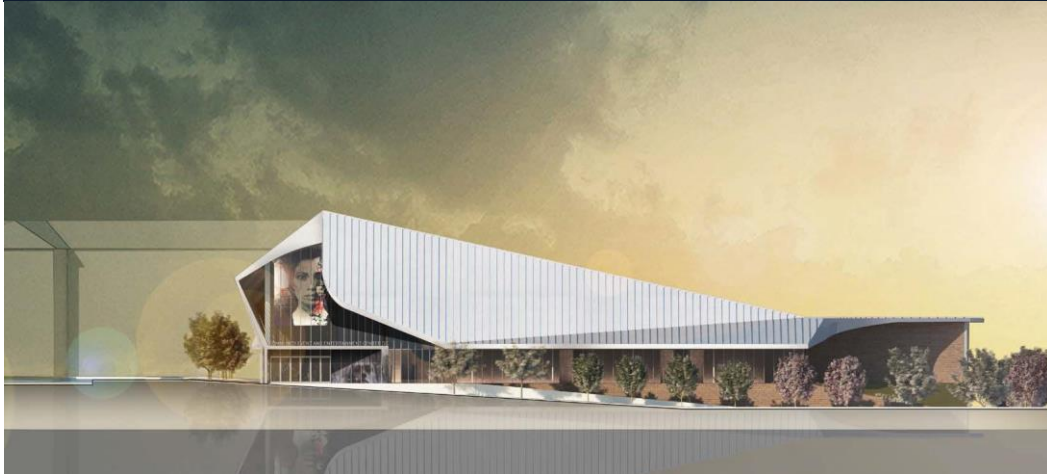


Marshall Moya Design | **ROSSETTI**

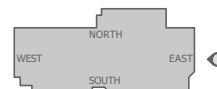
NORTH ELEVATION



EAST ELEVATION

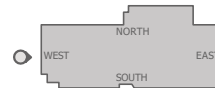


115



Marshall Mayo Design | **ROSSETTI**

WEST ELEVATION



WTS

Marshall Moya Design | **ROSSETT**

BUILDING AESTHETIC



Basketball Court



Food Court



Outdoor Theater

BUILDING AESTHETIC



Marshall Mayo Design | ROSSETTI

BUILDING AESTHETIC



BUILDING AESTHETIC



BUILDING AESTHETIC





Q&A



Entertainment & Sports Arena CONSTRUCTION MANAGER INTRODUCTION



Entertainment & Sports Arena Community Briefing





ABOUT SMOOT CONSTRUCTION

For more than four decades, Smoot Construction has been providing construction services in the District of Columbia and surrounding National Capitol Region. The Smoot portfolio includes over 90 specific projects totaling more than \$2.9 billion construction dollars on behalf of such clients as DGS, DCPL, Smithsonian Institution and Architect of the Capitol.



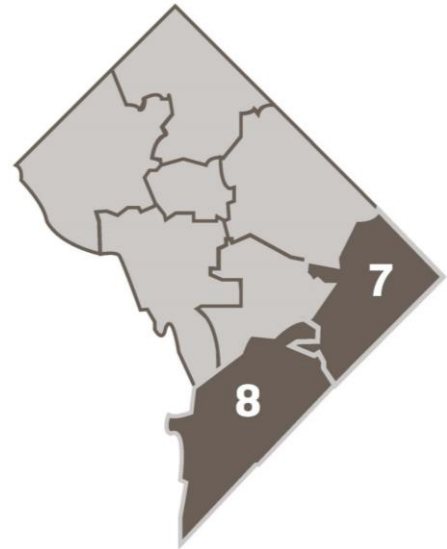
ABOUT GILBANE BUILDING COMPANY

A Top 5 Builder in the DC metro area, Gilbane works with notable clients such as the D.C. Department of General Services, D.C. Public Library, Tishman Speyer, Capital One, Children's National Medical Center and others to build a portfolio of diverse and complex facilities.

Smoot|Gilbane's partnership spans over 50 years. A relationship that began in the 1960s through mentorship and has developed into a strong peer partnership. From the on-time, on-budget delivery of University of Maryland's Comcast Arena to the award-winning Dunbar and Roosevelt High School projects, the Smoot|Gilbane Joint Venture **can deliver tough DC jobs and exceed local business and workforce goals.**

Our Commitment to Small & Local Business

- **35%** CBE subcontracting requirement
- Specific focus on **Ward 7** and **Ward 8**
- Support the construction process
 - Trade Contractors
 - General Conditions - wide range of service providers



Our Past Experience



Local and Small Business Subcontracting Results

National Museum of African American History and Culture Washington, DC \$163.3M	Walter E. Washington Convention Center Washington, DC \$250M
Roosevelt High School Modernization Washington, DC \$60M	St. Elizabeth's Psychiatric Hospital Washington, DC \$69.7M
Nationals Park Washington, DC \$203.7M	H.D. Cooke Elementary School Washington, DC \$11.8M
Dunbar Senior High School Washington, DC \$64.8M	National Academy of Science Headquarters Washington, DC \$20M
CityCenterDC Washington, DC \$186.6M	Ron Brown College Preparatory High School Washington, DC \$22M

Our Commitment to the DC Workforce

- **40% job hours** performed by **District Residents**
 - By Trade
 - Wage Classifications
 - » Journey Worker
 - » Apprentice
 - » Skilled Labor
 - » Common Labor
- Focus on **Ward 7 & Ward 8** Residents
- Total of **51%** of New Hires – **District Residents**



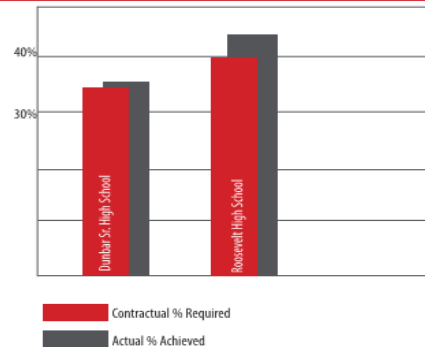
Our Past Experience



LOCAL WORKFORCE PARTICIPATION

Hours Worked by DC Residents

These projects provide only a snapshot of our history of success.



WAGES PAID TO DC RESIDENTS

\$5.1 million

Roosevelt High School Modernization

\$3.8 million

Dunbar Sr. High School New Construction

Our Commitment to Mentoring Small Businesses



Community Outreach & Engagement Plan



Pre-Project Conferences – Community Organizations

- Present the Business & Workforce Opportunities
- Early 2017 – Early 2018



Host Education Seminars

- Project Opportunities
- Qualification, bidding, change orders, RFI, and payment processes
- Now thru Early 2017



Encourage Alliances between Prime and SBE firms

- Build Capacity
- Bid specifications
- Early 2017 thru Early 2018

Community Outreach & Engagement Plan



Coordinate with Local Agencies

- Business & Trade Associations
- Building & Construction Trades Council
- Assist subcontractors
- Local workforce goals
- Now thru Early 2018



Workforce Development Collaboration

- Ward 7 & Ward 8 Focus
- Referral Sources – DC Residents
- Contractor Resources
- Now thru 2018

Get to Know Us...We Want to Get to Know You

- **Onsite Construction Activities**

- Jumanne Smith
- Don Smith

- **CBE and Workforce Participation**

- Linda Graves
- Chrystal Stowe

- **Bid List**

- Jackie Washington





Q&A